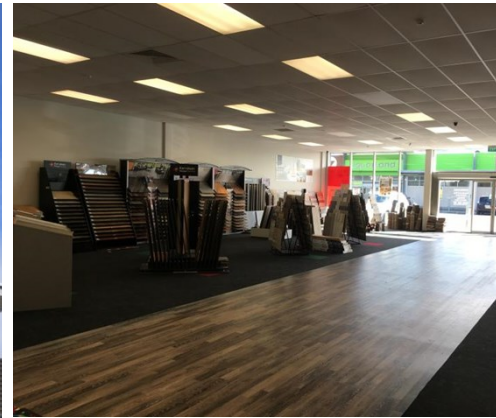


FOR LEASE



16 Parumoana Street, Porirua Central

Harbourside Retail Park

Description

This is one of the last large retail offerings in the Porirua area.

The size of the shop is 528.39m² including the loading dock/storage room at the rear.

It is the intention to sublease part of the area.

And there is another area of 133m² off to one side that can be leased separately.

Please call AI to discuss the options.

All prices indicative plus GST (if any).

To view this property and to discuss other options in the area, please call the Agent on (027) 223 6013.

Area m²: 280
Rent \$/m²:
Rent pa:
Net/Gross: Gross
Parking: 32

Contact:

AI Gustafson
04 210 0361 | 027 223 6013
al@agentcommercial.nz